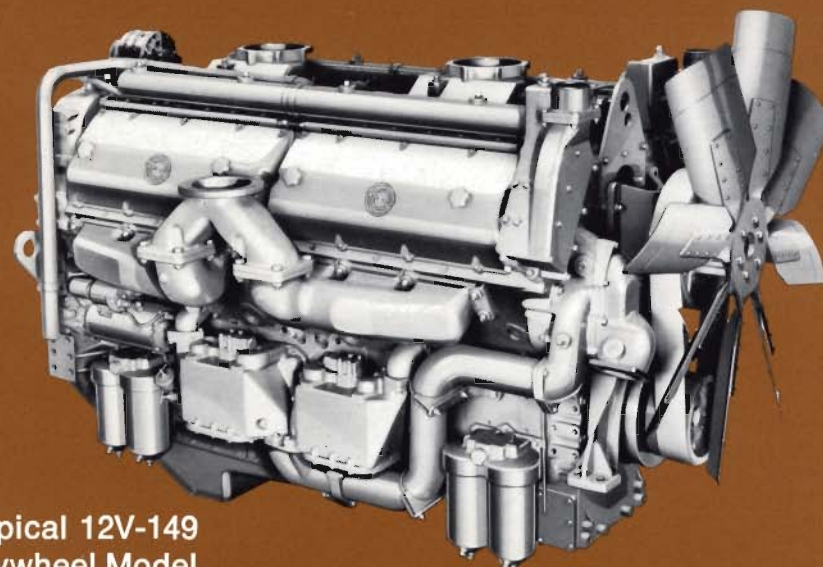


Detroit Diesel Engines

fan-to-flywheel
models

12V-149
800 hp

12V-149T
1000 hp



Typical 12V-149
Fan-to-Flywheel Model

specifications

Basic Engine	12V-149 130 Injectors	12V-149T 150 Injectors
Model	9123-7000	9123-7300
Engine Type	Two Cycle	Two Cycle
Number of Cylinders	12	12
Bore and Stroke	5.75 in x 5.75 in (146 mm x 146 mm)	5.75 in x 5.75 in (146 mm x 146 mm)
Two Cycle Displacement (Every Downstroke a Powerstroke)	1792 cu in (29.39 litres)	1792 cu in (29.39 litres)
Rated Power: SAE: 85°F (29.4°C) and 29.00 in Hg (98.19 kPa) Bar. (Dry)	800 BHP (597 kW) @ 1900 RPM	1000 BHP (746 kW) @ 1900 RPM
Continuous Power: SAE: 85°F (29.4°C) and 29.00 in Hg (98.19 kPa) Bar. (Dry)	675 BHP (504 kW) @ 1800 RPM	—————
Torque: SAE: 85°F (29.4°C) and 29.00 in Hg (98.19 kPa) Bar. (Dry)	2310 lbs ft (3132 N·m) @ 1500 RPM	2915 lbs ft (3952 N·m) @ 1500 RPM
Compression Ratio	17 to 1	17 to 1
Approximate Dimensions:		
Length	92 in (2337 mm)	91 in (2311 mm)
Width	57 in (1448 mm)	63 in (1600 mm)
Height	67 in (1702 mm)	69 in (1753 mm)
Net Weight (Mass) (dry)	8880 lbs (4028 kg)	9095 lbs (4125 kg)

For complete dimensional information, refer to installation drawing 2SA363 for Model 9123-7000 and 2SA362 for Model 9123-7300.

Rating Explanation

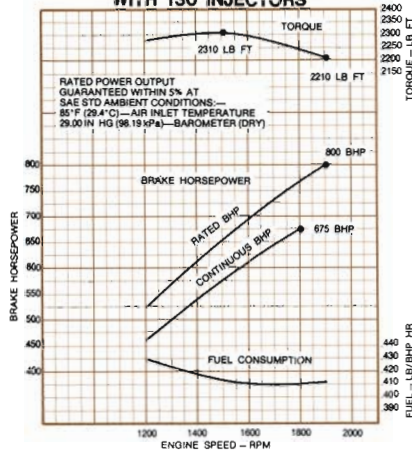
RATED BHP is the power rating for variable speed and load application where full power is required intermittently. Performance may be derated to improve fuel economy and extend engine life.

CONTINUOUS BHP is the power rating for applications operating under a constant load and speed for long periods of time.

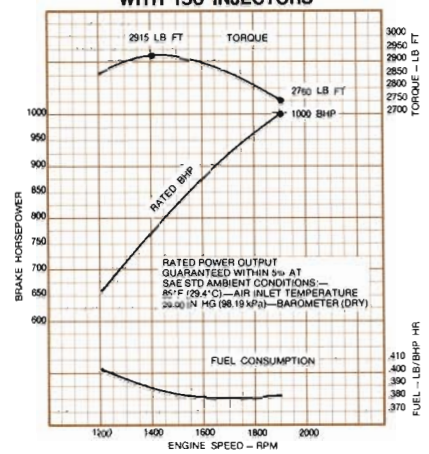
FUEL CONSUMPTION CURVE shows fuel used in pounds per brake horsepower hour.

THESE RATINGS do not include power requirements for accessory and standard equipment.

**BASIC ENGINE PERFORMANCE
MODEL 12V-149
WITH 130 INJECTORS**



**BASIC ENGINE PERFORMANCE
MODEL 12V-149T
WITH 150 INJECTORS**



standard equipment

Air Inlet Housing

Alternator—24 volt, 65 amp

Crankshaft Pulley—Poly-Vee

Engine Mounts—Front trunnion

Exhaust Manifold—Vertical Center Outlet

Fan—48 in (1229 mm), 8 blades, suction, Model 9123-7000 only; 52 in (1331 mm), 8 blades, suction, Model 9123-7300 only

Flywheel—SAE #0

Flywheel Housing—SAE #0, dual starter pads

Fuel Filters

Governor—Variable speed

Injectors—Cam operated, unit type, clean tip

Lube Oil Cooler

Lube Oil Filter—Full flow

Oil Pan—Stamped pan for 15° inclination angle, dual sump

Starting Motor—Two (2) 24 volt

Turbocharger—Model 9123-7300 only

For a complete listing of standard and optional equipment, consult your authorized Detroit Diesel Allison representative.

Specifications subject to change without notice.



Detroit Diesel Allison
Division of General Motors Corporation

13400 West Outer Drive Detroit, Michigan 48228

In Canada: Diesel Division, General Motors of Canada Limited London Ontario